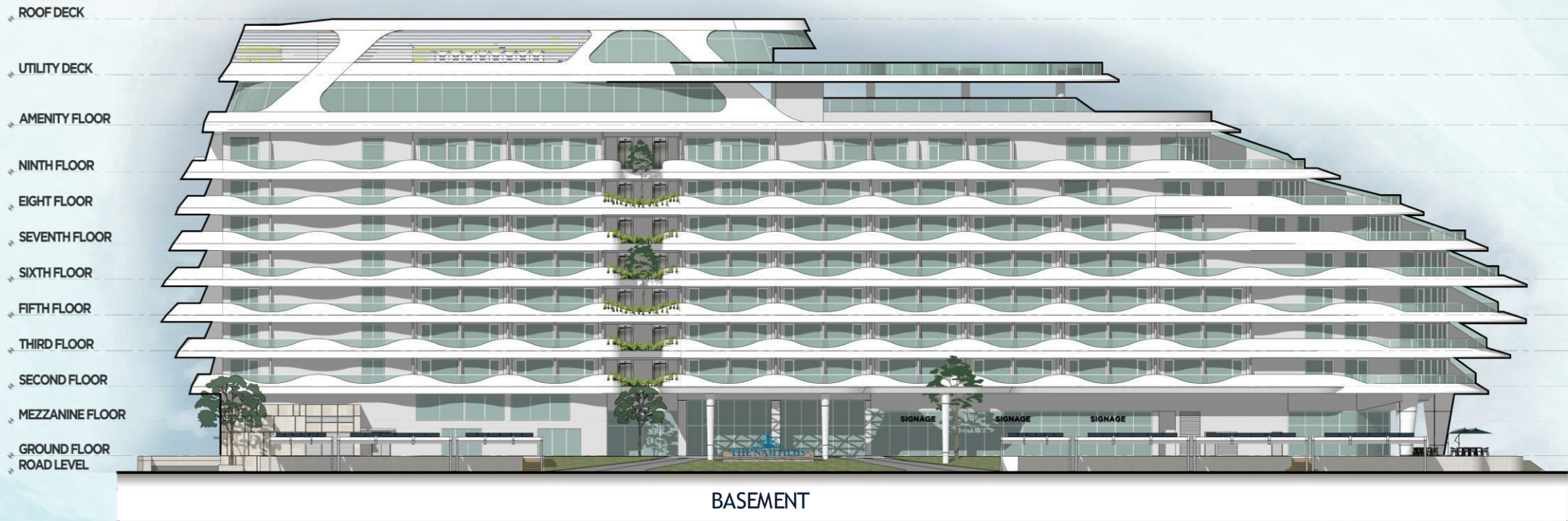




THE NAUTILUS

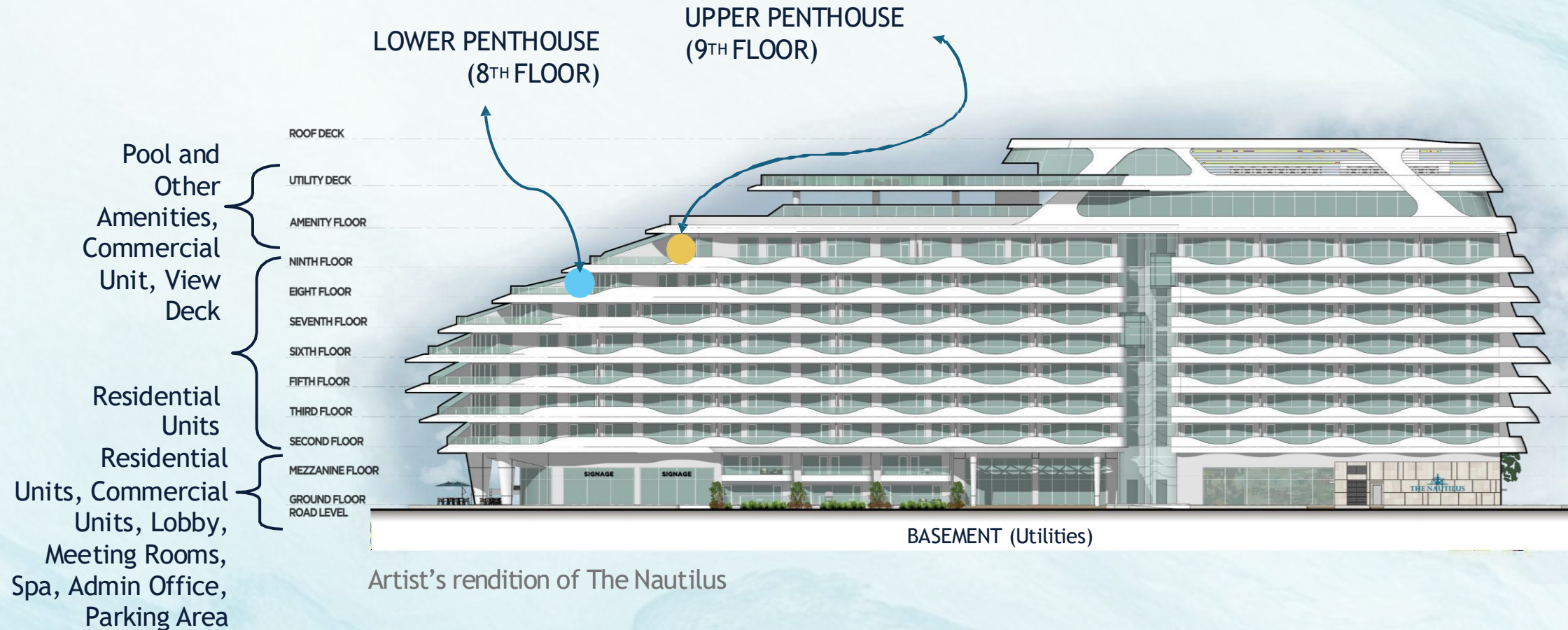
Calatagan South Beach

STACKING PLAN



Artist's rendition of The Nautilus

STACKING PLAN & GENERAL USE



UNIT TYPES WITH TYPICAL SIZES (SQM)



- Studio (38.1 sqm)
- 1BR (63.4 sqm)
- 1BR Loft (65.0 sqm)
- 2BR (77.1 sqm)
- 3BR (143.5 sqm)



Artist's rendition of The Nautilus

UNIT TYPES WITH TYPICAL SIZES (SQM)



-  1BR (63.4 sqm)
-  2BR (95.1 sqm)
-  2BR Loft (124.6 sqm)
-  3BR (147.6 sqm)



Artist's rendition of The Nautilus

GROUND FLOOR PLAN

● AVAILABLE



- Studio Unit

1BR Unit

1BR Loft

2BR Unit

2BR Loft

3BR Unit

Retail Area

Common Area

Other Areas

Parking Slot - Regular (12.5 SQM)

Parking Space - PWD (25.0 SQM)



MEZZANINE FLOOR PLAN

● AVAILABLE



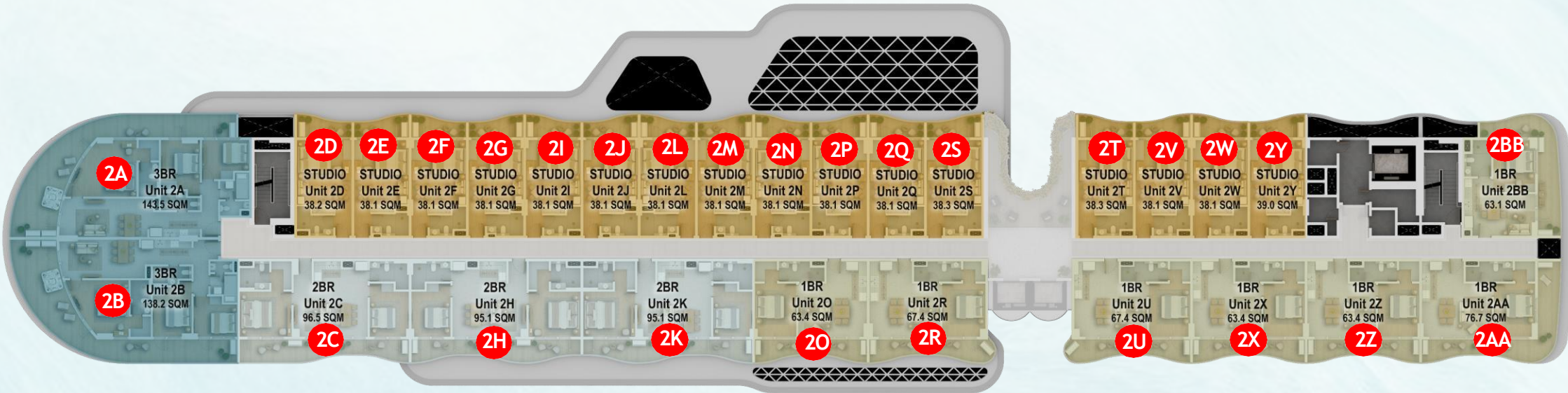
- Studio Unit
- 1BR Unit
- 1BR Loft
- 2BR Unit
- 2BR Loft
- 3BR Unit
- Retail Area
- Common Area
- Other Areas

2ND FLOOR PLAN

● AVAILABLE

Facing Miami South Street / Parking Area

Facing Beach / Boardwalk



Facing Aquaria Waterpark



3RD FLOOR PLAN

● AVAILABLE

Facing Miami South Street / Parking Area

Facing Beach / Boardwalk



Facing Aquaria Waterpark



5TH FLOOR PLAN

● AVAILABLE

Facing Miami South Street / Parking Area

Facing Beach / Boardwalk



- Studio Unit

1BR Unit

1BR Loft

2BR Unit

2BR Loft
- 3BR Unit

Retail Area

Common Area

Other Areas

Facing Aquaria Waterpark



6TH FLOOR PLAN

● AVAILABLE

Facing Miami South Street / Parking Area

Facing Beach / Boardwalk



Facing Aquaria Waterpark



7TH FLOOR PLAN

● AVAILABLE

Facing Miami South Street / Parking Area

Facing Beach / Boardwalk



Facing Aquaria Waterpark



8TH FLOOR PLAN / LOWER PENTHOUSE

● AVAILABLE

Facing Miami South Street / Parking Area

Facing Beach / Boardwalk



Facing Aquaria Waterpark

- Studio Unit

1BR Unit

1BR Loft

2BR Unit

2BR Loft
- 3BR Unit

Retail Area

Common Area

Other Areas



9TH FLOOR PLAN / UPPER PENTHOUSE

● AVAILABLE

Facing Miami South Street / Parking Area

Facing Beach / Boardwalk



- Studio Unit

1BR Unit

1BR Loft

2BR Unit

2BR Loft
- 3BR Unit

Retail Area

Common Area

Other Areas

Facing Aquaria Waterpark



10TH FLOOR PLAN

Facing Miami South Street / Parking Area

Facing Beach / Boardwalk



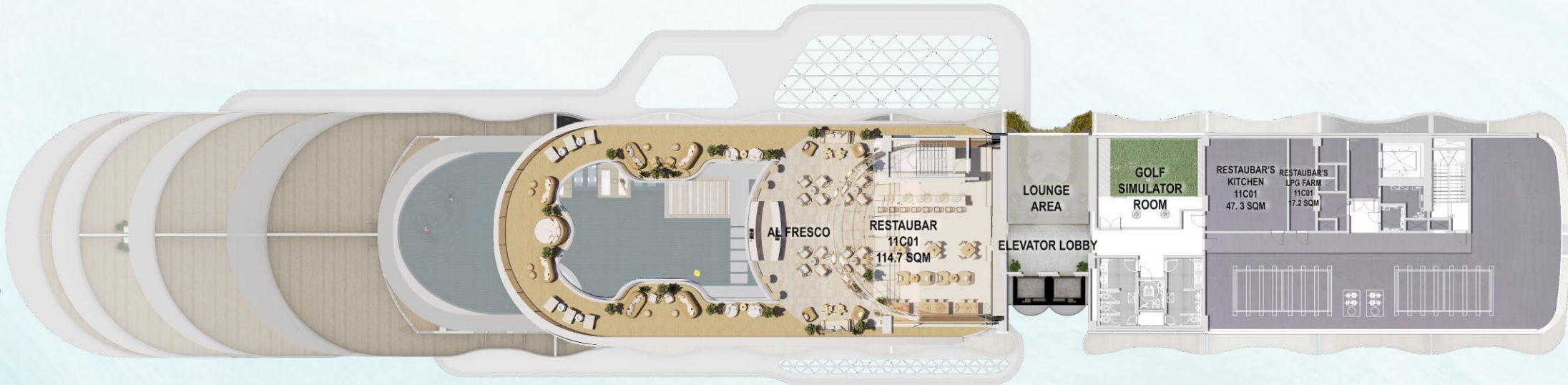
Facing Aquaria Waterpark



11TH FLOOR PLAN

Facing Miami South Street / Parking Area

Facing Beach / Boardwalk



Restaubar Total Floor Area - 181.9 SQM

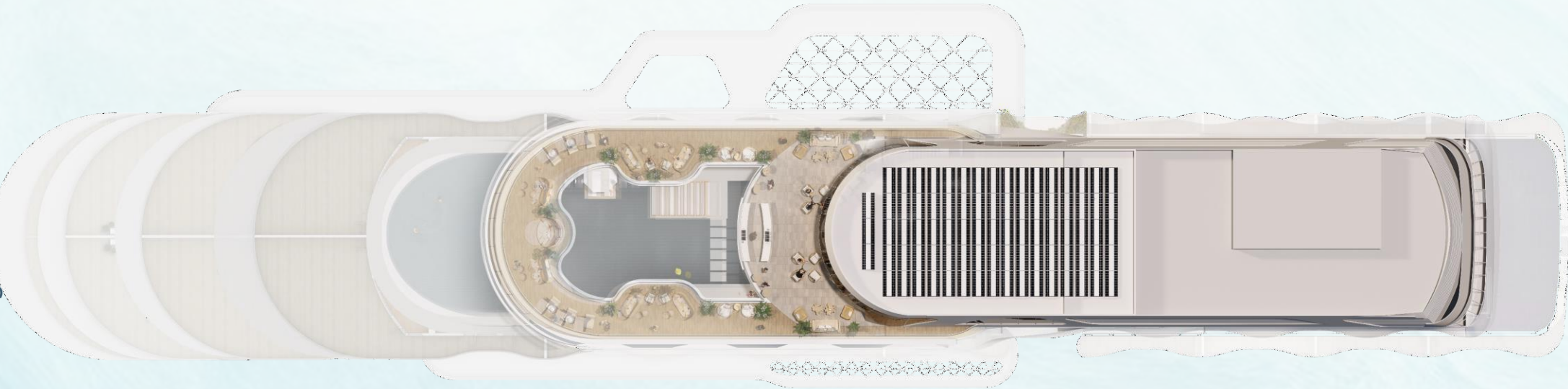
Facing Aquaria Waterpark



ROOFDECK FLOOR PLAN

Facing Miami South Street / Parking Area

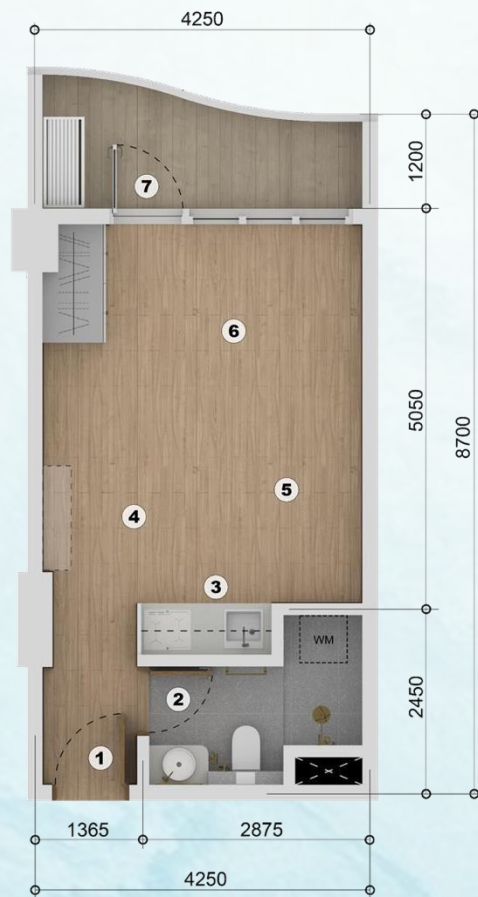
Facing Beach / Boardwalk



Facing Aquaria Waterpark



STUDIO UNIT (38.1sqm)



Deliverable



Dressed-Up



STUDIO UNIT TYPE C

Location: 2F, 2I, 2Q, 3F, 3I, 3Q, 5F, 5I, 5Q, 6E, 6H, 6P, 7F, 7N

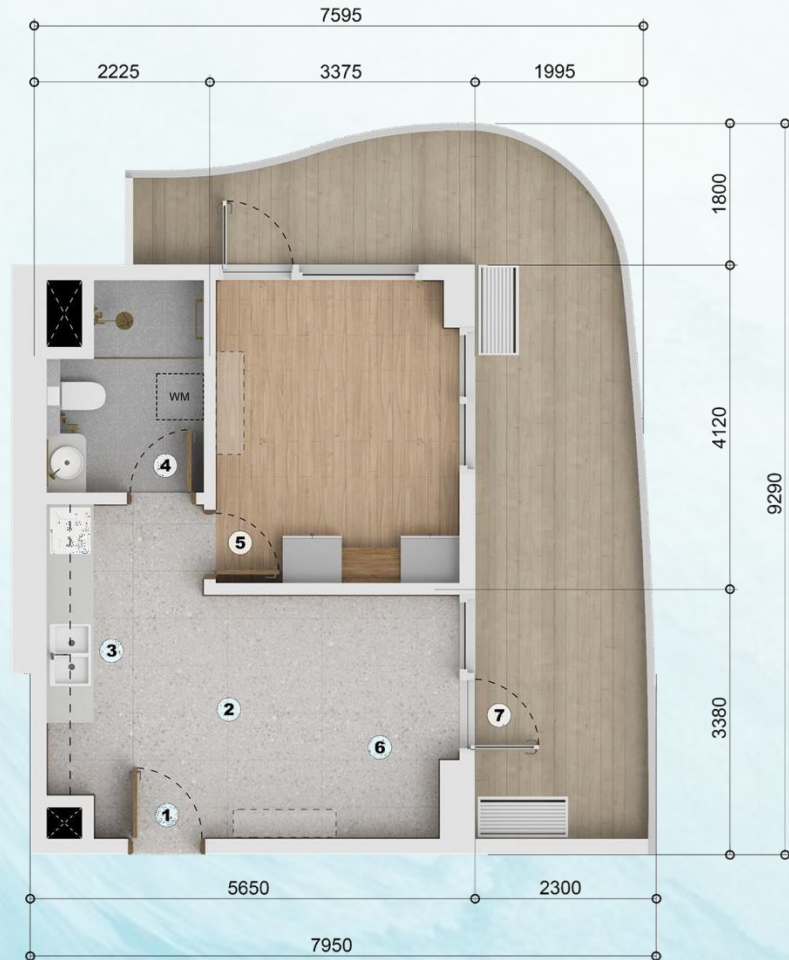
NOTE: Total unit areas of this type is 38.10sqm

LEGEND

Indoor Floor Area	sq.m	sq. ft.
1 Foyer	2.44	26.26
2 Bathroom	5.88	63.29
3 Kitchen	2.54	27.34
4 Dining Area	4.67	50.26
5 Living Area	4.74	51.02
6 Bedroom	11.61	124.96
Sub Total (area varies)	31.81	343.12
Outdoor Floor Area		
7 Balcony	6.21	66.84
Total (area varies)	38.1	410.10

Disclaimer:
While every attempt has been made to ensure the accuracy of the building and floor plan contained herein, measurements of doors, walls, ceiling heights, windows, rooms, and any other items are approximates only. The particulars and details are based on present plans and are given in good faith and for illustrative purposes only. No representation is being made herein and its contents are subject to changes without prior notice and do not constitute part of an offer or contract. Plans are not to scale

1BR UNIT (67.7sqm)



Deliverable



Dressed-Up



1 BEDROOM UNIT CORNER B

Location: 2BB, 3BB, 5BB, 6AA, 7Y, 8S, 9M

NOTE: Total unit areas of this type vary from 63.10-81.60 sqm (679.20-878.33 sq. ft.)

LEGEND

Indoor Floor Area	sq.m	sq. ft.
1 Foyer	2.41	25.94
2 Dining Area	6.49	69.85
3 Kitchen	5.50	59.20
4 Bathroom	6.62	71.25
5 Bedroom	13.92	149.83
6 Living Area	7.19	77.39
Sub Total (area varies)	42.13	453.46
Outdoor Floor Area		
7 Balcony	25.53	274.80
Total (area varies)	67.7	778.23

Disclaimer:
While every attempt has been made to ensure the accuracy of the building and floor plan contained herein, measurements of doors, walls, ceiling height, windows, rooms and any other items are approximate only. The particulars and details are based on present plans and are given in good faith and for illustrative purposes only. No representation is being made herein and its contents are subject to changes without prior notice and do not constitute part of an offer or contract. Plans are not to scale.

1BR UNIT (67.4sqm)



Deliverable



Dressed-Up



1 BEDROOM UNIT CORNER C

Location: 2R, 3R, 5R, 6Q, 7O, 8K, 9E

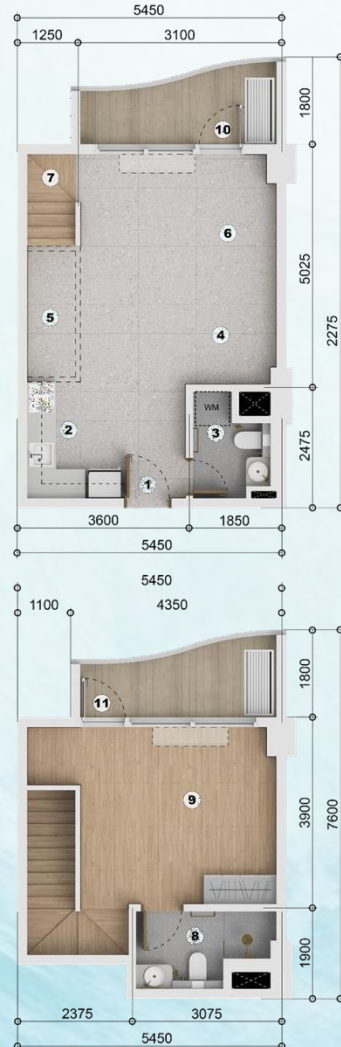
NOTE: Total unit areas of this type is 67.40sqm.

LEGEND

Indoor Floor Area	sq.m	sq. ft.
1 Foyer	2.14	23.03
2 Kitchen	5.90	63.50
3 Dining Area	10.07	108.39
4 Living Room	10.67	114.85
5 Bathroom	6.48	69.75
6 Walk-In Closet	3.42	36.81
7 Bedroom	14.72	158.44
Sub Total (area varies)	53.40	574.77
Outdoor Floor Area		
8 Balcony	14.00	150.69
Total (area varies)	67.4	725.48

Disclaimer:
While every attempt has been made to ensure the accuracy of the building and floor plan contained herein, measurements of doors, walls, ceiling height, windows, rooms and any other items are approximate only. The particulars and details are based on present plans and are given in good faith and for illustrative purposes only. No representation is being made herein and its contents are subject to changes without prior notice and do not constitute part of an offer or contract. Plans are not to scale.

1BR LOFT UNIT (79.9sqm)



1 BEDROOM LOFT A

Location: 6D

NOTE: Total unit areas of this type is 65.25 sqm.

LEGEND

Indoor Floor Area	sq.m	sq. ft.
1 Foyer	3.23	34.76
2 Kitchen	3.43	36.92
3 Powder Room	4.58	49.29
4 Dining Area	7.62	27.87
5 Storage	2.59	82.02
6 Living Area	7.96	85.68
7 Stairs	3.17	34.12
8 Bathroom	5.39	58.01
9 Bedroom	14.60	157.15
Sub Total (area varies)	66.96	565.85
Outdoor Floor Area		
10 GF Balcony	6.39	66.84
11 Loft Balcony	6.39	66.84
Total (area varies)	79.9	702.34

Disclaimer:
While every attempt has been made to ensure the accuracy of the building and floor plan contained herein, measurements of doors, walls, ceiling height, windows, rooms and any other items are approximate only. The particulars and details are based on present plans and are given in good faith and for illustrative purposes only. No representation is being made herein and its contents are subject to changes without prior notice and do not constitute part of an offer or contract. Plans are not to scale.

Deliverable



1 BEDROOM LOFT A

Location: 6D

NOTE: Total unit areas of this type is 65.25 sqm.

LEGEND

Indoor Floor Area	sq.m	sq. ft.
1 Foyer	3.23	34.76
2 Kitchen	3.43	36.92
3 Powder Room	4.58	49.29
4 Dining Area	7.62	27.87
5 Storage	2.59	82.02
6 Living Area	7.96	85.68
7 Stairs	3.17	34.12
8 Bathroom	5.39	58.01
9 Bedroom	14.60	157.15
Sub Total (area varies)	66.96	565.85
Outdoor Floor Area		
10 GF Balcony	6.39	66.84
11 Loft Balcony	6.39	66.84
Total (area varies)	79.9	702.34

Disclaimer:
While every attempt has been made to ensure the accuracy of the building and floor plan contained herein, measurements of doors, walls, ceiling height, windows, rooms and any other items are approximate only. The particulars and details are based on present plans and are given in good faith and for illustrative purposes only. No representation is being made herein and its contents are subject to changes without prior notice and do not constitute part of an offer or contract. Plans are not to scale.

Dressed-Up

2BR UNIT (95.1sqm)



2 BEDROOM UNIT B

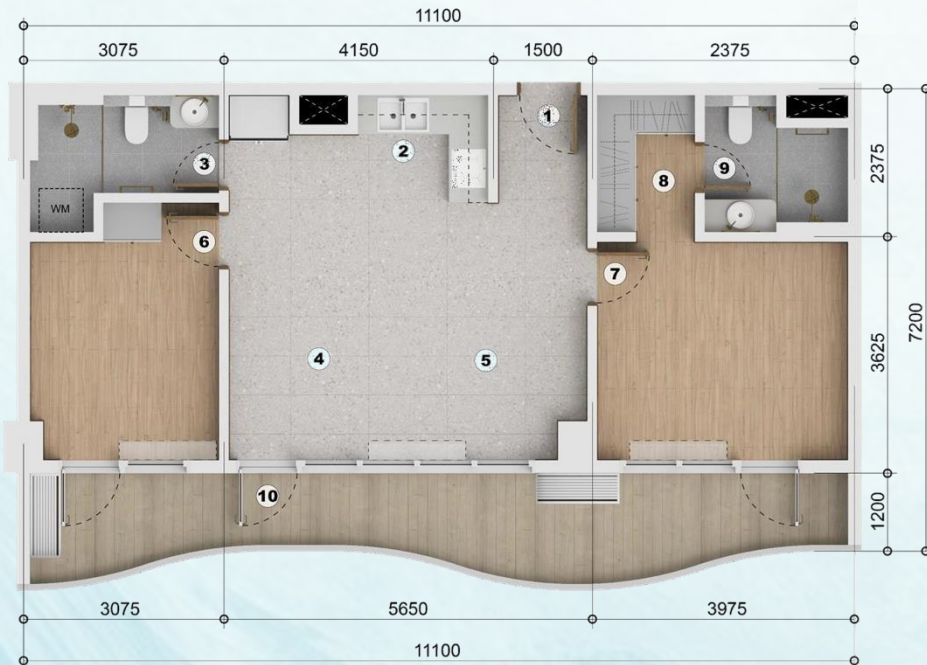
Location: 2H, 3H, 5H, 6G, 7E, 8C, 9C

NOTE: Total unit areas of this type vary from 95.10-95.13 sqm (1023.64-1023.91 sq. ft.)

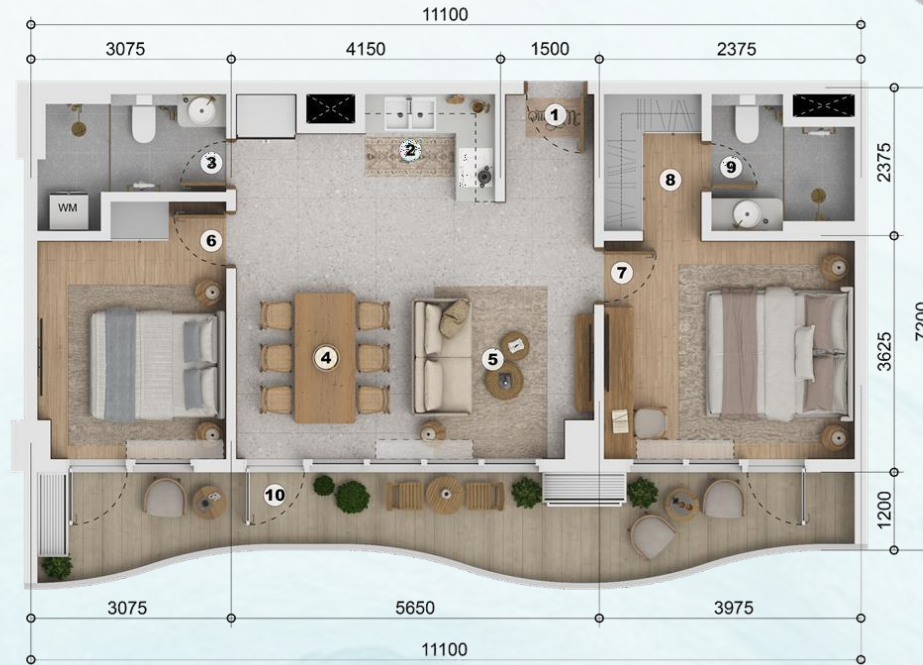
LEGEND

Indoor Floor Area	sq.m	sq. ft.
1 Foyer	2.77	29.81
2 Kitchen	7.68	82.66
3 Powder Room	6.15	66.19
4 Dining Area	10.82	116.46
5 Living Area	12.63	135.94
6 Bedroom	12.31	132.50
7 Masters Bedroom	14.49	155.96
8 Walk-In Closet	3.92	42.19
9 Bathroom	5.64	60.70
Sub Total (area varies)	76.50	823.43
Outdoor Floor Area		
10 Balcony	18.62	200.42
Total (area varies)	95.1	1023.91

Disclaimer:
While every attempt has been made to ensure the accuracy of the building and floor plan contained herein, measurements of doors, walls, ceiling heights, windows, rooms, and any other items are approximates only. The particulars and details are based on present plans and are given in good faith and for illustrative purposes only. No representation is being made herein and its contents are subject to changes without prior notice and do not constitute part of an offer or contract. Plans are not to scale



Deliverable



Dressed-Up

2BR UNIT (147.6sqm)



3 BEDROOM UNIT D

Location: 5B, 6B

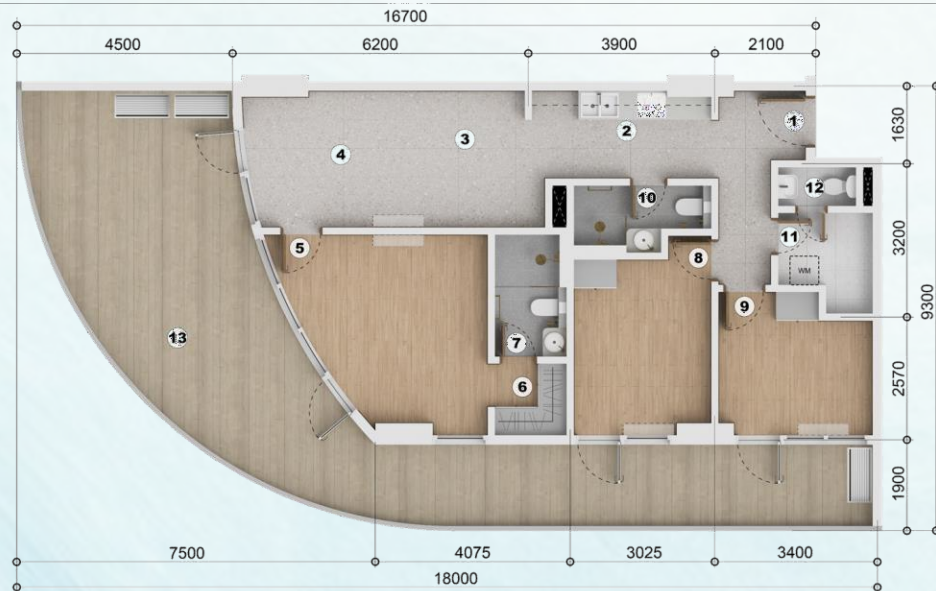
NOTE: Total unit areas of this type may vary.

LEGEND

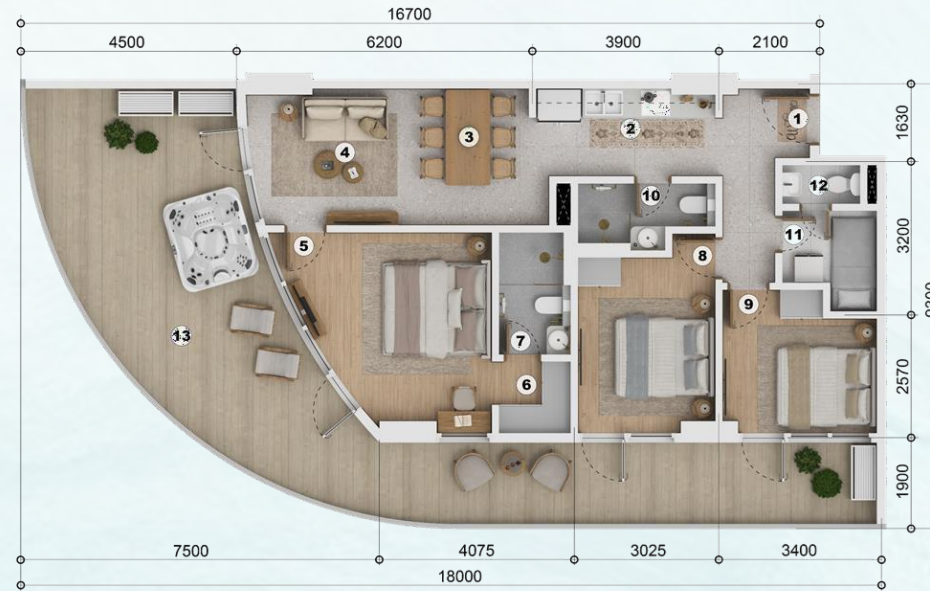
Indoor Floor Area	sq.m	sq. ft.
1 Foyer	6.92	74.48
2 Kitchen	7.90	85.03
3 Dining Area	8.34	89.77
4 Living Area	10.34	111.29
5 Masters Bedroom	17.26	185.78
6 Walk-In Closet	3.32	35.73
7 Masters T&B	4.45	47.89
8 Bedroom 1	12.80	137.77
9 Bedroom 2	10.51	113.12
10 Common T&B	4.26	45.85
11 Utility	4.01	43.16
12 Toilet	2.11	22.71
Sub Total (area varies)	92.22	992.43

Outdoor Floor Area	sq.m	sq. ft.
13 Balcony	55.31	595.35
Total (area varies)	147.6	1588.75

Disclaimer:
While every effort has been made to ensure the accuracy of the building and floor plan contained herein, measurements of doors, walls, ceiling heights, windows, rooms, and any other items are approximate only. The publication and details are based on present plans and are given in good faith and for illustrative purposes only. No representation is being made herein and its contents are subject to changes without prior notice and do not constitute part of an offer or contract. Plans are validly made.



Deliverable



Dressed-Up